



As used by:



NEC

Siemens



Postjet Systems Ltd

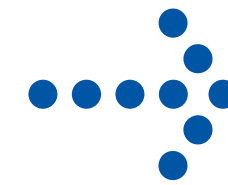
Unit 6B, Beechwood, Chineham

Park,Basingstoke, Hampshire RG24 8WA

t +44 (0) 1256-479585

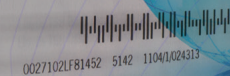
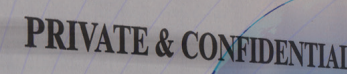
f+44 (0) 1256-652222

e info@postjet.co.uk www.postjet.co.uk



your image is our business
first class solutions for Postal Indicia

the postjet 400



The postjet 400 series postal printer

The very latest postal printer from PostJet – the PostJet 400 series – combines a compact footprint with new built-in print controller electronics delivering high-speed, high-resolution printing.



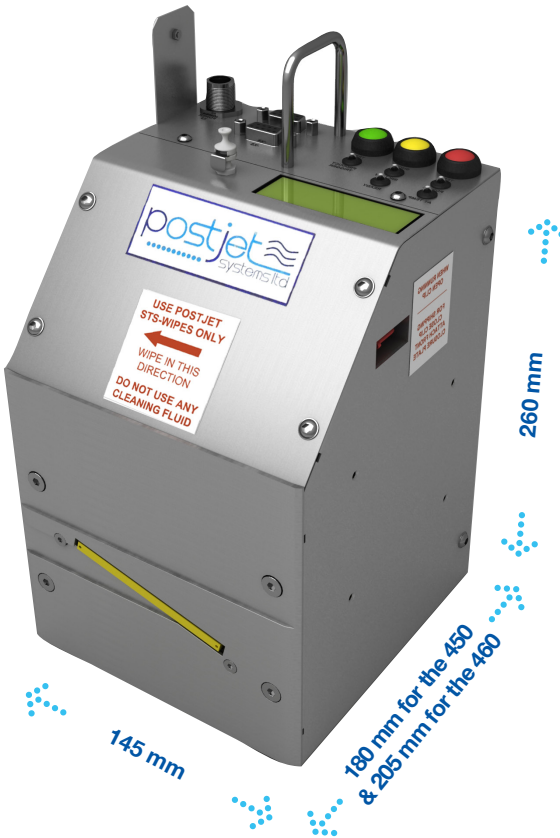
With its embedded controller and integral LCD display, the 400 series is the first PostJet printer to include full functionality in a single box, allowing easy retrofit in a variety of applications.

And the 400 series unique design also allows users to connect a PC via TCP/IP and use PostJet's new PC application, 'PostMaster', making the task of planning, designing and delivering print runs flexible and simple.

The PostJet 400 is easy to install, set up and use, and, with fewer spares to manage, users benefit from much lower maintenance costs too.

- ❖ High print quality – up to 325 dpi
- ❖ High process speeds – up to 5 metres per second
- ❖ Simple to install & maintain
- ❖ Lowest cost of ownership
- ❖ Proven reliability
- ❖ Quick start up – under 4 minutes
- ❖ User-friendly, PC controlled graphical interface
- ❖ Unrivalled uptime

The PostJet 400 series – the most cost effective, high-speed, high-resolution series of postal printers.



Technical overview

Innovative, integrated design and industry expertise have combined to produce a printer that delivers high-speed, high-resolution results for high-speed mail handling machines.

Highlights

- Print speed up to 5 m/s
- Resolutions up to 325 dpi
- Embedded controller – no need for an external controller
- Integral 2 x 16 LCD display
- GUI and control through TCP/IP

Print Configurations

- From 10mm to 50mm vertical print heights
- 128 or 256 individually controllable channels
- Vertical Resolution up to 325 dpi
- Horizontal Resolutions up to 300 dpi
- Maximum Fire Frequency 30KHz

Technical Overview

- CPU – High performance Digital signal Processor
- SDCard for Jobs/True Type Fonts
- Max ink umbilical length 2m
- Max line speed 5m/s
- Max Throughput 30 per second (> 100K per hour)
- 1 Encoder input, 1 trigger input
- RS232
- RS422
- Ethernet (TCP/IP and FTP client)
- Parallel Port
- Configurable inputs and outputs
- Max stored Job (on SD CARD) > 1000
- Max on-the-fly-jobs > 1000
- Up to 288 variable characters per Job DataMatrix, Postnet, Planet, IMB, ITF, Klix and otherbarcode capability
- Factory air not required
- External Power Supply
- 4 minute start-up from cold

SYSTEM	Maximum Line Speed	Print-Heights
450LT	2 m/s	10mm to 29mm
450SS	5 m/s	10mm to 29m
460SS	5 m/s	25mm to 50mm

